

ABOUT THE NSW SCHOOLHOUSE MUSEUM

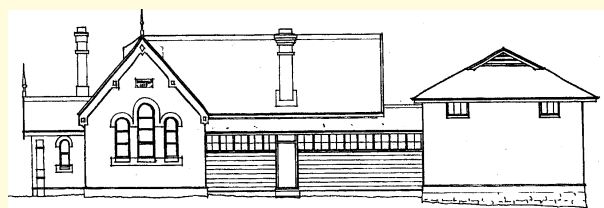


ORIGINAL SCHOOLROOMS

The NSW Schoolhouse Museum was the first school building of North Ryde Public School, and dates back to 1877. The school started as a single schoolroom with separate teacher's residence built on one acre of land donated by Richard Wicks in 1877. The school, named City View Public School, opened on the 25th January 1878 to 45 pupils. Its name changed to North Ryde Public School in 1879.

By the early 1890s, 76 pupils were crowded into the single schoolroom so a second room was added in 1893. Two more rooms were added in 1910 as the school population reached 133.

Over the years the 1877 and 1893 rooms had uses such as library, staffroom and headmaster's office while the 1910 rooms were used as classrooms until 1985. The teacher's residence was demolished in the 1960s.



Original room, 1877 1893 Addition 1910 Addition

RESTORATION

In 1986 the rooms were converted to district offices and when they were vacated, school and community members lobbied to preserve the buildings and establish a museum. They were restored by a group of volunteers during 1992 using the original plans.

The building is furnished with original Department of Education school furniture acquired from the Department's former furniture storage facility. The timber weatherboard demountable building to the was relocated to the site and is located on the site of the original schoolmaster's residence.

COLLECTION

The NSW Schoolhouse Museum collects and preserves objects and items relating to the history of public education in NSW. On display are early texts, pupils' work, teaching resources and items from children's daily lives. Objects have been acquired from schools that have closed, the Department of Education and personal donations. The museum is managed by a voluntary committee which meets quarterly.

SCHOOL EXCURSIONS

The museum is open for pre-booked school excursions on Mondays and Wednesdays. Students experience early school lessons, examine a range of objects and artefacts and do outdoor activities such as games, drill and maypole dancing.



2nd & 3rd class, North Ryde PS, 1923

**NSW SCHOOLHOUSE MUSEUM
OF PUBLIC EDUCATION**
Cox's Road, North Ryde, 2113
Phone/Fax 9805 1186
info@schoolhousemuseum.org.au
www.schoolhousemuseum.org.au